

# Shed Notes

Issue 315

August 2014



WOODCRAFT  
GUILD·ACT

**NEXT MEETING: Wednesday 27 August 2014, 1930 - 2130**

**Venue: The SHED, Lions Youth Haven, Kambah Pool Road, KAMBAH ACT 2902**

## *Mystery Meeting*

**Despite our best efforts, we were not able to organize a specific speaker for the August meeting.**

Instead, we will offer a variety of short presentations on subjects of interest. If you want to know what they will cover, you'll just have to come to the meeting — that's why it's a mystery!

One thing I can reveal is that the meeting will be conducted by our inimitable President, freshly returned from his Northern Hemisphere peregrinations, bearing divers goodies and tales of wondrous sights (WARNING: don't get him started on TechShops ...). Dan tells me he would like to use some of the time to open the meeting up and seek some feedback from members present on how well the Guild serves their needs, and on what improvements they would like to see in the new Guild year. So come along prepared to give us your two bob's worth (in the old way of telling time ...). *Ed.*

\*\*\*\*\*



## ANNUAL RAFFLE

Have you collected your books of tickets yet?

Just a reminder at left of the magnificent First Prize in our Annual Raffle—Shannon Henry's *Black Cockatoo on Huon Pine*. If you haven't yet collected some books of tickets from David French or Ian Fitzpatrick, then please do so ASAP, and get selling! (See article on page 8).

### *Contents*

Presidential Palaver .....	2
Vice-Presidential Verisimilitudes ..	2~3
Coming Events .....	4
SIG Reports .....	5~6
Front Bench .....	6~7
Off-Cuts: .....	7~9
• Membership Renewal.....	7~8
• Custom Cauls / Raffle .....	8
• French Polishing & Restoration ..	8
• Milling Services / DIY Cyclone...	9
<b>For Sale:</b> Antique LampChimneys ..	10
Closing Down Sale / Liberon .....	10
Sponsors .....	11~12

*Please note that the opinions expressed in articles in this Newsletter are those of the authors alone, and do not necessarily reflect the views, or positions, of the Woodcraft Guild of the ACT Inc as an organization.*

### *Executive Committee of the Guild:*

President:	<b>Dan Steiner</b>	<a href="mailto:president@woodcraftguild.org.au">president@woodcraftguild.org.au</a>
Vice Pres:	<b>Rod Tier</b>	<a href="mailto:vicepresident@woodcraftguild.org.au">vicepresident@woodcraftguild.org.au</a>
Secretary:	<b>Hugh Milloy</b>	<a href="mailto:secretary@woodcraftguild.org.au">secretary@woodcraftguild.org.au</a>
Treasurer:	<b>Andrew Hewat</b>	<a href="mailto:treasurer@woodcraftguild.org.au">treasurer@woodcraftguild.org.au</a>

*Newsletter Editor: Rod Tier* [editor@woodcraftguild.org.au](mailto:editor@woodcraftguild.org.au)

*Correspondence: The Secretary, PO Box 1411, WODEN ACT 2606*

*Website: <http://www.woodcraftguild.org.au>*

*ABN 79 748 587 157*

# PRESIDENTIAL PALAVER



As much as I enjoyed my holiday, it's good to be back.

As we approach the Guild's Annual Exhibition, many will see this as the culmination of a year of creativity and craftsmanship, taking pride in showing their work off to the public. My thanks to Hugh Milloy and his Exhibition Committee for their hard work in preparing for what should be another successful Exhibition. This annual event demonstrates to the public, and members, our keen interest in woodwork and in honing skills in the many distinct areas of our craft.

This is also a time when we look forward, both individually and as a Guild, to new projects and activities. I am always interested in learning new techniques and want to expand my skills to take on a wider range of projects. I get much of my knowledge from watching other members work; talking with them about their skills; and receiving advice and feedback on my own work. The Guild has been invaluable to me, including the access it provides to equipment I can never have in my small workshop.

I would like to encourage Members to become more active in helping the Guild to better serve their interests and needs. It is vital that the Guild assists you in your woodworking. We welcome the contribution of your knowledge, sharing your ideas for improvements and participating in groups to learn / to teach and to socialise with other members. I want to get your feedback on how the Guild can better serve your interests, and I look forward to catching up with many of you at the August meeting.

At the coming AGM we will see over half the current members step down from the Committee, and we are looking for others to take this opportunity to make a contribution to shaping the direction of the Guild. Please contact me and let's talk about this now.

**Dan Steiner, President** 0415 133 606 [president@woodcraftguild.org.au](mailto:president@woodcraftguild.org.au)

## VICE-PRESIDENTIAL VERISIMILITUDES



### The Return of the Pres

Rejoice! The yoke of the Tierant is lifted, and once more the People of the Guild are free!

Incidentally, that includes the Vice-President, and reflecting on my newly-regained freedom brought to mind that crusty old polymath Benjamin Franklin, who once rather testily observed:

*"They who can give up essential liberty to obtain a little temporary safety  
deserve neither liberty nor safety."*

How's that as a motto for "Team Austraya", Tony?

But before I hand over entirely to Dan, there are a few matters still in train from my period of ~~custody~~ custodianship.

### Events

**Annual Exhibition, 5-7 September 2014 at EPIC — Exhibition Committee Chair, Hugh Milloy**

An email went out a few days ago outlining the changed arrangements for the Timber & Working with Wood Show / Annual Exhibition. Unfortunately, our set-up period has been severely truncated, which means that we will be depending on the cooperation of all Guild members involved in order to have everything up and running in time for the Friday morning Show opening. **It is particularly important that entrants in both the Competition and Display categories deliver their entries on Thursday morning before 1100.** I acknowledge that this may prove difficult for some members who may be

working that day, or are otherwise unable to attend in person. If that is the case, I can only suggest that you negotiate with fellow Guild members — perhaps in your favourite SIG — who can attend, and ask them to act as your agent for delivery of your entries.

The other important matter affected by the new arrangements is the **location to which you should deliver your entries**. The new Exhibition area is in the back corner of the Budawang Pavilion, at the “city end” (nearest the Northbourne Avenue / Flemington Road junction). There is a large doorway there, which is accessible by driving around to the rear of the Pavilion and parking among the trees. Lynne Clark will be set up just inside this entrance, ready to receive and log in your entries. **Please do not enter the Pavilion through the front doors and wander around among the commercial exhibitors who will be very busy setting up their stands — this would create a safety and security risk.** Please also be careful when approaching the rear of the building, as other exhibitors’ vehicles will also be using the area.

As these are new and untested arrangements, I appeal to all members to employ a bit of common sense to their involvement, and to do their best to help Hugh and his Exhibition team manage the setup.

### Annual Raffle

Books of tickets are now available from David French and Ian Fitzpatrick, particularly at the monthly meeting on 27 August, so get selling!

### Introduction to Woodturning Course — 30~31 August 2014

I am pleased to report that this course is fully subscribed, with ten aspiring (and, by Sunday, perspiring) novice turners booked in for two days of fairly intense, but hopefully rewarding, tuition in the gentle art of cajoling form and function from spinning lumps of wood by the assiduous application of sharp pointy things.

### Accreditation

He’s on a roll — Brian Treanor has added to his accreditory accomplishments by arranging, together with Furniture SIG Coordinator Mathew Klein, a recent training session for 14 users of the new Oscillating Drum Sander. Lynne Clark tells me this machine will occupy the vacant 12 spot on the list of competencies on the back of your membership cards.

As I have noted previously, Brian and his team have now significantly reduced the backlog of members seeking accreditation. I understand he is now planning ahead to offer another round of training sessions in the hopefully warmer spring months, probably late October to November. Details will be announced in the Newsletter.

### Shed Etiquette

Following on from my rant on this subject in the July issue, one of the regular users of the Smithy has mentioned to me that he is becoming very annoyed by the thoughtlessness of other, probably occasional, users of the facility who leave — as he so eloquently put it — “all sorts of crap” on the main workbench. It has become a repository for any bits of scrap metal which may have been lying around the Shed, as well as a rough sorting area for people looking for the right size of nut/bolt/screw from one of the containers at the end of the bench. The problem is that, having found their appropriate fastener, they tend to just leave the unwanted bits scattered on the bench, rather than returning them to the storage bins. This means that anyone — like members of the TAG SIG — needing to use the bench for legitimate metalworking have to waste their time clearing away the detritus from their workspace. Not good enough!

And while I’m on the subject — if you do visit the Smithy to use the pedestal drill, or file something held in the engineering vice, **clean up the swarf after you**, so that somebody else doesn’t end up with a metal fragment stuck in their finger, or worse, in their eye.

Yet again, I echo President Dan’s mantra: ***“Keep it Clean in 2014”***.

And so, I relinquish the reins of power and hand them to the rightful holder. As my Irish great-grandfather used to say, “*Och well, dere y’are ...*”

**Rod Tier, Former Acting President 0408 278 460 [vicepresident@woodcraftguild.org.au](mailto:vicepresident@woodcraftguild.org.au)**

# EDITORIAL EFFLUVIUM



*“When you can't make them see the light, make them feel the heat.”*

**Ronald Reagan**

***Editor***

\*\*\*\*\*

## COMING EVENTS

### *Internal*

#### **Next Monthly Guild Meeting:**

**Wednesday, 24 September 2014, 1930, at the Shed. ANNUAL GENERAL MEETING**

### *External*

#### **Next Triton Club Meeting:**

**Wednesday, 03 September 2014** – (For further information, visit the club's website at <http://www.tocact.org.au>)

#### **TW<sup>3</sup>S / Annual Guild Exhibition:**

**05 ~ 07 September 2014, at EPIC (NB: Awards Night, Thursday 04 Sep)** – Our premier event for the year is nearly here. There is barely time for frantically completing your entries; the **deadline for Entry Forms is Wednesday 27 August; all entries must be delivered to EPIC by 1100 on Thursday 04 September..** All enquiries and last-minute desperate pleas should be directed to Chairman **Hugh Milloy**, on **0419 300 750**, or at [exhibition@woodcraftguild.org.au](mailto:exhibition@woodcraftguild.org.au)

#### **Canberra Home & Leisure Show:**

**24 ~ 26 October 2014 at EPIC** – Another opportunity for Guild members to display their skills and wares. Details of Guild involvement and calls for volunteers will appear in Newsletters nearer the date.

#### **Marymead Fete:**

**November 2014 (day TBA), from 0900 to 1400, at Marymead**, 255 Goyder Street, Narrabundah – the Guild will be represented by a modest stall, with all Guild proceeds donated to the Marymead charity.

#### **Canberra Show:**

**27 February ~ 01 March 2015, at EPIC** – Another opportunity for Guild members to display their skills and wares. Details of Guild involvement and calls for volunteers will appear in Newsletters nearer the date. Consider making an entry in the Woodcraft Section — they need the competition! **NB: Entries close on 19 December 2014.**

\*\*\*\*\*





## SPECIAL INTEREST GROUP (SIG) REPORTS

(SIG Coordinators: please note the deadline for newsletter input: **2<sup>nd</sup> Friday of each month.**)

**Furniture SIG:** The SIG met on 09 August, starting with a demonstration of different clamps and clamping techniques. Members then continued with their individual projects.

The SIG will next meet on **13 September, starting at 1pm**. I will be away from Canberra for the next two meetings. Terry O'Loughlin will attend in September to open and supervise the SIG; hopefully, someone can do the same in October.

*Mathew Klein 6231 0475 [furniture@woodcraftguild.org.au](mailto:furniture@woodcraftguild.org.au)*

**Miniatures & Mandrel (aka Pen) SIG:** On 02 August, Jim Venis came along and showed us the ins and outs of turning acrylic pens. Not only did he turn an acrylic pen, but he did it on his cute and very small lathe, which he had mounted to a board so that it could be clamped to a bench, as shown below left..



Before turning a pen, Jim gave a very informative presentation on the difference between the two main types of plastic — thermosoftening, which can be reformed by heating (such as acrylic), and thermosetting, which remain solid once set (such as melamine). Either form can be used for pen bodies, but particular care must be taken with drilling, turning and polishing thermoplastics, because excess heat can cause major problems. Jim typically finishes his pens with “wet and dry” paper dipped in water, followed by a liquid polish, with the result shown below right.

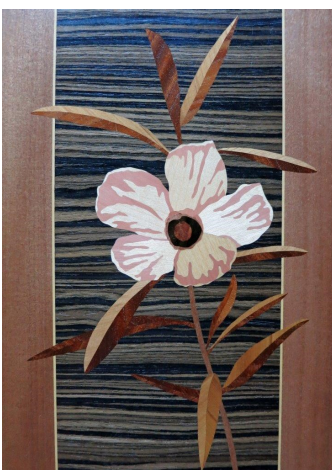
Next month our normal meeting day, 06 September, coincides with the Annual Exhibition, so there won't be a SIG that weekend. Our next meeting will be on **04 October, starting at 10am**. I haven't lined up a demonstration for the day, as yet, but by the next newsletter, maybe ... In the meantime, don't spend too much money at the Timber & Working with Wood Show, but remember, ideas are free!



*Gai Simpson 6231 4139 [mandrel@woodcraftguild.org.au](mailto:mandrel@woodcraftguild.org.au)*

**Scrollsaw & Marquetry SIG:** Despite the inclement weather, 12 members attended the Model-Making session on Sunday, 17 August. With ideas of a future diorama of a typical Australian country town, the concept was tossed around as to what types of buildings could be included; what embellishments added; what scenery enhancements; and so on. Members were then set to draw their own plans, on the benchmark of a single-story house having 100mm high walls.

The Shed then became a hive of activity. Some members elected to pursue their own projects; some had to try out our new ‘General’ scroll saw. I wrestled with the angles required in making a simple rectangular hipped roof; while our youngest member went one better and designed an L-shaped house; and another designed a Service Station. Only one building was completed by close of play: (Yes — you guessed it!) the littlest house of all.



This theme will be continued at our **next meeting on Sunday, 21 September**.

‘Show and Tell’ included Don Rowland's exquisite marquetrie wall-plaque of *Australian Native Hibiscus*, shown at left (which you could win in the Guild Raffle – be sure to get your books of tickets). Briony F also had a marquetrie piece well on the way to being ready for entry in the Annual Exhibition. We wish her a wonderful 13th birthday on 23 August!

*David French 0428 121 934 [scrollsaw@woodcraftguild.org.au](mailto:scrollsaw@woodcraftguild.org.au)*

**Introduction to Woodworking SIG:** The August meeting was well attended, with a mix of new and experienced attendees. Again a cold evening, but the work got everyone warmed up.

We had a quick overview of planes and planing – what was intended as a 20-minute chat ended up going for nearly an hour, with members asking many questions. Newer members enthusiastically started on the entry projects, and showed obvious enthusiasm for learning more about working with wood. The more ambitious projects continued apace.

The promised agenda item about joints and their construction ended up in a discussion of what type of joint to start on. Perhaps surprisingly, the group decided to tackle a practice dovetail joint, and several members completed their first ever hand-cut dovetail. I suspect that future Exhibitions will have quite some competition.

Again another enjoyable learning experience for the coordinator as well as members.

*Dave Callan 0407 930 303 [basics@woodcraftguild.org.au](mailto:basics@woodcraftguild.org.au)*



**Saturday Turning SIG:** On Saturday, 23 August, Paul Wayper demonstrated turning of natural-edged bowls and end-grain forms, as shown in the accompanying photos.

The next SIG will be on Saturday, 20 September, starting as usual at 1000 with individual projects.



*Satnam Singh 6286 2045 [turningsat@woodcraftguild.org.au](mailto:turningsat@woodcraftguild.org.au)*

**Between Centres Turning SIG:** Another interesting SIG meeting at Jim Reid's woodturning workshop out Murrumbateman way. If you are interested in an extensive range of manufacturing machines and hands-on woodturning techniques, this is the place to see it all happen.

Last month's meeting saw Jim demonstrating a range of 'Harry Potter'-style wands, and kitchenware knife-handles made from a various Australian timbers. Members witnessed sanding to a fine finish, and coating using one of the many polishing oils and spray lacquers Jim has on hand — always an educational part of the demonstration. Another advantage of these sessions is that Jim encourages members to have a go at turning similar items while he advises, and sometimes guides their unsteady hands.

SIG meetings here also include access to a large range of information regarding woodworking machinery and tools; coating and polishing products; and demonstrations of sharpening methods. And, we must not forget, coffee and Julie's delicious cake!

*Jim Venis 6241 1465 [turningbc@woodcraftguild.org.au](mailto:turningbc@woodcraftguild.org.au)*

\*\*\*\*\*

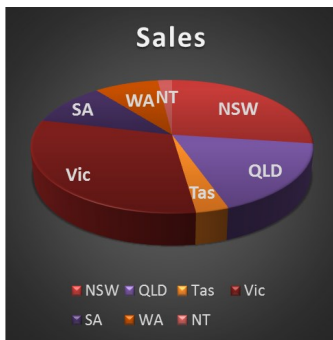
## THE FRONT BENCH



Nigel Catchlove, Communications Manager of the Australian Forest Products Association (AFPA) spoke from the Front Bench at the July meeting of the Guild. AFPA is the peak advocacy body for growers, processors of timber resources, and manufacturers of pulp and paper. AFPA lobbies the government on policy and regulations on behalf of their members.

Nigel explained that, as an industry body, they often have to work hard to dispel some of the myths about the industry's activities and products. Australia only has 6.6% of its forest available for harvesting, and of that, only a small portion is actually harvested. The total forest available for harvesting is 147 million hectares, with

conservation using 2.2 million, plantations 2.4 million, and multi-uses 9.4 million.



The image of lumberjacks cutting logs does not reflect the highly mechanized form of harvesting that takes place today. Furthermore, the industry plants 45 million trees per year. Much of the publicity in Australia concerns forestry in Tasmania, and there is an impression in the community that most of Australia's trees are in Tasmania. The figures provided by Nigel show that Tasmania's portion of the overall \$7.6 billion contribution by forest products to the GDP is about 3.3%, as shown at left.

Interestingly, while forest products contribute approximately \$2 billion in exports, we import \$4 billion worth of forest products per year. These figures suggest that most value-adding to Australian forest products occurs overseas.

Nigel emphasized the social contribution the forest industry makes to rural Australia. He mentioned a number of country towns where forestry employment involves a significant proportion of the workforce.

Nigel compared the Green House Gas Emissions (GHGE) of building a house from timber, compared to using concrete or steel. Timber fared very favourably, and Nigel also provided figures that showed the forest products industry was the only industry in Australia, in fact, that was carbon positive.

The storage of carbon was a point used by Nigel to emphasize that forestry expansion is crucial to increasing the storage of absorbed carbon over time. Trees store carbon, but if we do not fell any trees the carbon storage base will remain static. If, however, we harvest trees sustainably — by planting replacements — more carbon can be stored in trees and tree products.

A major challenge to the industry is a lack of research and development. The CSIRO has been drastically cut, with forestry science being a major target. This means that the R&D in places like Canada is not occurring in Australia, and our experts and their ideas are going overseas. An example of Canadian innovation has been the result of the devastating effect of the pine beetle on their industry. From diseased trees they have developed a product called veneer strand lumber, shown at right, which compresses fibres from the dead trees into a useable timber product.



Finally, unlike in Europe, there has been a reluctance in Australia to substantially use timber products in building construction. Therefore the demand for value-added products, such as cross-laminated timber, is low. This causes an economy of scale issue, and the costs of production are too high for local manufacturing to be economical. There are a few exceptions, where a major company has substantially used timber and timber products to construct buildings in Melbourne, as shown at left.

(All graphs and photographs reproduced with the permission of AFPA.)

*Ray Halpin*

\*\*\*\*\*

## OFF-CUTS

### Miscellaneous Items of Interest

### MEMBERSHIP RENEWAL

**Time is running out!** For those yet to renew your membership for the 2014/15-membership year, please take the time to complete and submit a Renewal Form ASAP. The last opportunity to do so in person will be provided at this month's meeting, on Wednesday 27 August. Payment can be made in cash, by cheque or by credit card (Visa, MasterCard).



Please remember, that under the Guild's Rules, if you haven't renewed during the grace period allowed between 01 July and 31 August, you will **automatically cease to be a member**.

**Mike Nash, Membership Secretary 0400 625 004** [membership@woodcraftguild.org.au](mailto:membership@woodcraftguild.org.au)

\* \* \* \* \*

## CUSTOM CAULS

I was googling for a way to straighten a bowed/warped neck and came across this great way of making cauls that fit exactly to the piece of wood (in this case a guitar neck) that you are working with. I was so impressed with this (seemingly) simple approach that I thought I'd share it with you all.

Check out the following link, which has highly detailed instructions and photographs of the technique — <http://harmony.demont.net/kamikazie.php?page=033>

Be good to know if anyone has had any experience with this approach of making clamping cauls, and even better neck-straightening, as the uke that I am working on has a bit of a bow that I'd like to address, without having to file down the frets, or worse still, remove the frets and re-level.

**Joe Kobier Coordinator, Musical Instrument Making SIG 0410 247 217**

\* \* \* \* \*

## ANNUAL RAFFLE

Books of tickets for the Guild's Annual Raffle will again be available at the monthly meeting on Wednesday 27 August, and all members are urged to do their best to sell them, and to promote the Exhibition on 05-07 September at EPIC. The prizes will be on display at the Exhibition, but the Raffle will not be drawn until the end of the Home and Leisure Show on 26 October.

Those who have promised prizes should present them as soon as they are available. We need to photograph them, so that a collage of the prizes will be available to you as you encourage people to purchase tickets, hopefully by the book-full! There are 10 prizes to be won with a total value of over \$3,000. First Prize, shown on the front cover, is the magnificent pyrography piece by Shannon Henry; "*Black Cockatoo on Huon Pine*", valued at over \$1,000.

\$16 for a book of 10 tickets is a bargain, giving 10 chances to win that great prize, or any of the other nine prizes made up of an excellent variety of Guild woodcraft.

For further information, delivery of completed prizes, or additional books of tickets see the Raffle Co-ordinators, **Ian Fitzpatrick** (6254 3722) or **David French** (0428 121 934; [scrollsaw@woodcraftguild.org.au](mailto:scrollsaw@woodcraftguild.org.au))

\* \* \* \* \*

## FRENCH POLISHING & FURNITURE RESTORATION

### Expressions of Interest

I hope to begin classes in French Polishing and Furniture Restoration sometime from late September, depending on the weather, as temperatures need to be a minimum of 15° C by day and 10° C by night, so that the polish will not set badly, or craze.

If you are interested in joining a group to learn these techniques, please let me know.

**Arie De Bear 6254 9733** [agjdebear@gmail.com](mailto:agjdebear@gmail.com)



## MILLING SERVICES

I just wanted to let Guild members know that a mate of mine, John Bradshaw, and I do log milling around Canberra.

John has a web page — [http://www.cgss.com.au/BGC\\_home.html](http://www.cgss.com.au/BGC_home.html) — which states that:

“BGC own and operate a portable swing-blade sawmill which is a Lucas Mill Model 6-18. The mill is capable of cutting dimensioned timber (up to 160 mm x 160 mm wide; 160 mm x 320 mm with double cut) and slabbing timber (up to 1.2 m wide) from logs up to 6.1 m long. The mill has an 18HP motor and is portable, safe and efficient to use.

The mill and operator can be hired on a range of options, including hourly rate, “log cube” rate, sharing timber, or a mixture of all three options.”

The operation is based out of Canberra and Bega.

*Don de Vries 0407 603 003*

\*\*\*\*\*

## DIY CYCLONE SEPARATOR



I thought Guild members might be interested in these two photographs of my home-made cyclone-motion woodchip separator.

The body of the separator is constructed from three plastic garden pots, purchased for \$50 from a hardware store, coupled to a standard ‘wheelie’ bin. The top two plastic pots are a snug fit into each other, requiring no additional adhesive bonding.

This means the unit can be separated into three sections: the top pot lid; the lower funnel and wheelie bin lid; and the mobile wheelie bin itself.

The ‘cyclone’ effect is induced by the inlet pipe from the lathe being angled into the separator body, as shown at left. All the wood shavings and chips fall into the bin, including much of the heavier dust particles. This takes the load out of



the dust collector airstream, preserving maximum suction.

Some tips from the construction: all joints are a snug fit, or secured with screws. The joints are caulked with silicon to minimize suction leakage, but although useful as a weak adhesive, the silicon compound cannot be relied upon to bond the plastic fittings together. To maintain options for disassembling and relocating the cyclone separator, all the attached PVC pipes are snug-fitting, with no adhesives used.

*Don de Vries*

\*\*\*\*\*

## PRINTING ON WOOD

Following the article in the July issue by Robin Cromer, showing how he had printed military images on his medal box lid, Steve Drummond has sent in this image of his dog, similarly printed on wood from a photograph.

As a reminder, the relevant website, brought to our notice by Richard Raffan, was:

<http://lifehacker.com/transfer-inkjet-printed-images-to-wood-with-almost-no-1568969360>



## FOR SALE

### ANTIQUE LAMP CHIMNEYS



A friend of our Schools Program Coordinator Phil Colman was having a bit of a clean-up recently, during which he came across a box of antique glass lamp chimneys, as shown at left. He offered them to Phil, as he thought they might be of interest to Guild members.

As shown in the photo, they can be readily attached to a suitable turned base, and fitted with a candle, or could presumably be used to renovate an old spirit lamp, if you had the appropriate fittings.

Phil is offering them at a price of **\$10** each, with the proceeds going to the Guild, but being earmarked for the Schools Program to help purchase suitable equipment for disadvantaged students.

Contact: **Phil Colman** on 6286 3639

\* \* \* \* \*

### CLOSING DOWN SALE

We have recently been contacted by **Fitch Sharpening and Tools Pty Ltd** to advise that, since they have been operating in two premises for a number of years, they have decided it is time to 'downsize', and have put Unit 8 (their front showroom) up for sale. Their workshop out the back is staying open, however, and they will continue to sell router bits, blades and abrasives from those premises.

What this means for Woodcraft Guild members is that Fitch's are having a closing-down sale, with all machinery 10% off, and everything else 20% off, until sold out.

Fitch's are located at **Units 8 + 13, 18 Whyalla Street, Fyshwick**; telephone 6228 1622.

\* \* \* \* \*

### LIBERON PRODUCTS

Endangered Heritage is a specialist materials conservation business based in Phillip, with a team of highly trained conservators who conserve artefacts and significant heritage items. They are also a supplier of quality **Liberon wood-finishing products**, Albox archival boxes and photographic sleeves, and Intercept anti-corrosion products.

Endangered Heritage have generously offered to sponsor our Annual Competition by providing Liberon vouchers as prizes. Please give them your support.

Their business is located at **Shop 3, 17 Dundas Court, Phillip**, telephone **6162 0073**, or email them at: [enquiries@endangeredheritage.com](mailto:enquiries@endangeredheritage.com)



\* \* \* \* \*





The Guild wishes to thank our  
Sponsors, in particular for their  
support of our 2013 Exhibition



**WOODCRAFT  
GUILD-ACT**

**impressive exhibitions**  
Pty Ltd



**Canberra Southern Cross Club**

**FELDER**

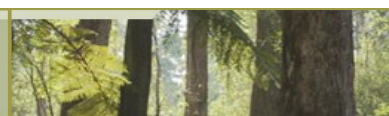
*... perfekte Holzbearbeitung!*

**CARBA-TEC**

**TOOLS FOR WOOD**

**HARE & FORBES**  
**MACHINERY HOUSE**

**LAZARIDES**  
TIMBER AGENCIES



The Australian  
**Woodworker**  
Magazine

**Trend Timbers**  
Specialists in fine woods from Australia and around the world.

**CARROLL'S Woodcraft Supplies**

Your one stop shop for all your woodcraft supplies



**TURNERS**  
BUILDING, JOINERY & SHOPFITTING SUPPLIES



**BOSCH**

Invented for life

**DREMEL**



**Vesper Tools**

SUPERB QUALITY WOODWORKING TOOLS  
SINCE 1998

Please consider our Sponsors  
when making your  
woodworking purchases !



**WOODCRAFT  
GUILD·ACT**

